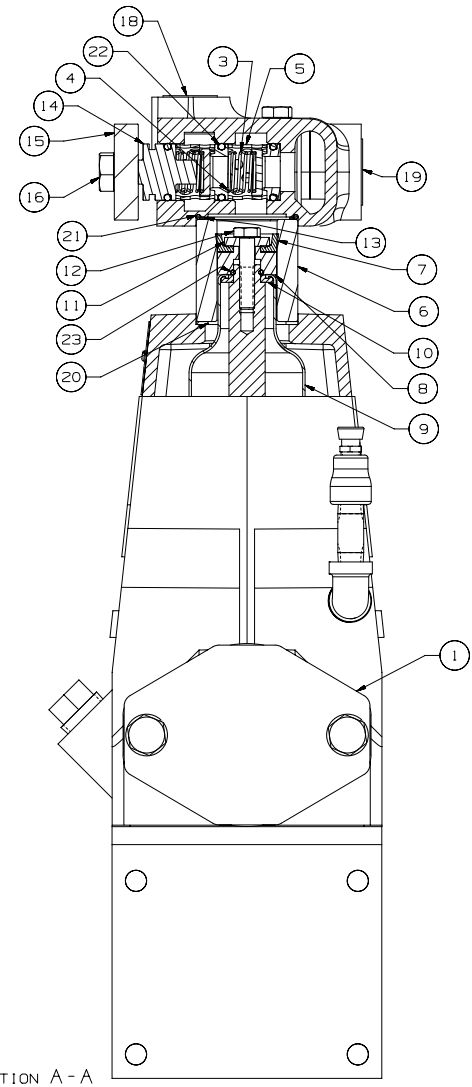
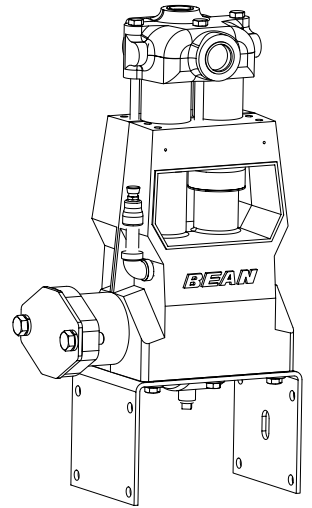


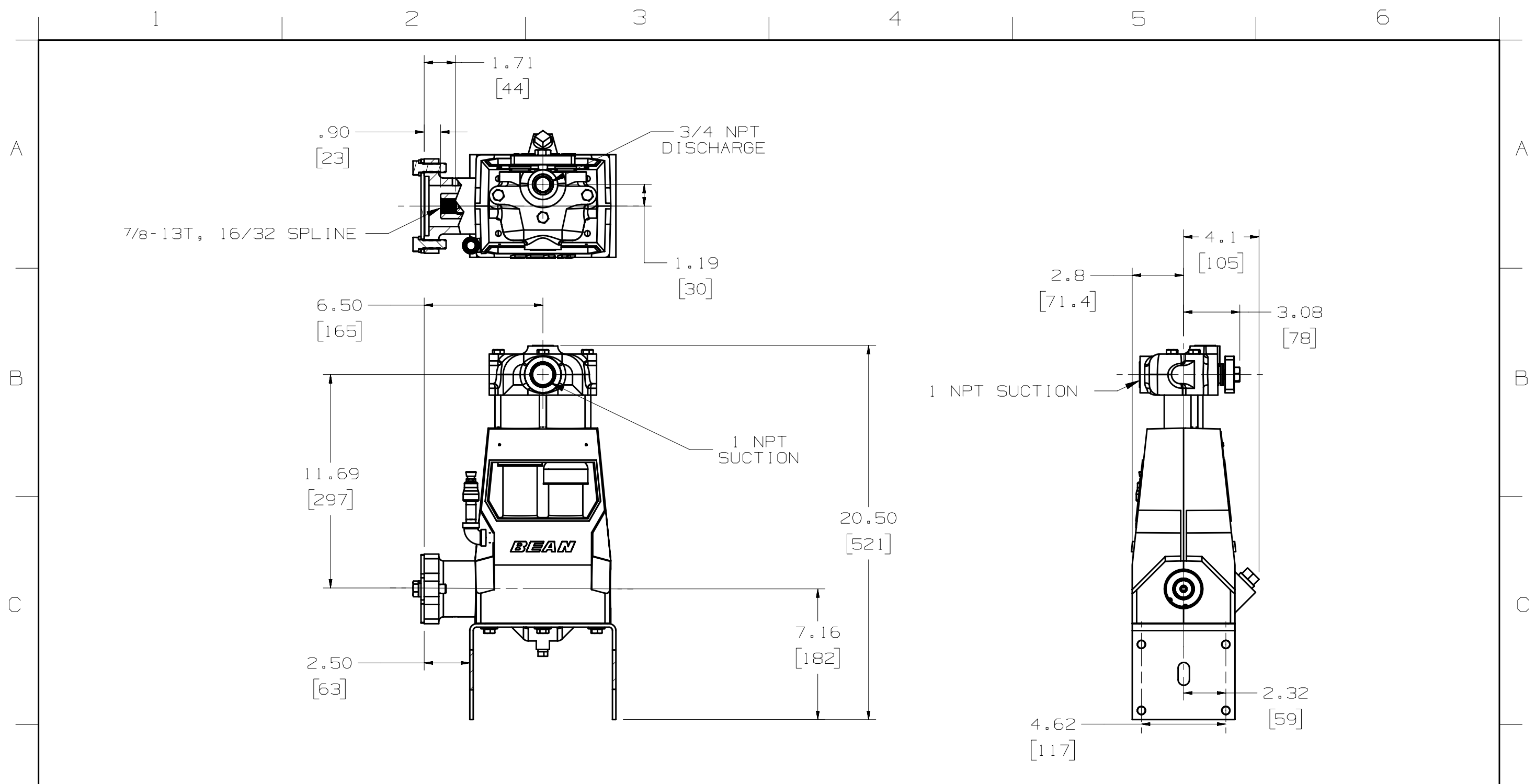
SECTION A - A



ITEM	DESCRIPTION	QTY
1	POWER END ASSEMBLY:	1
2	FLUID CYLINDER:	1
3	SPRING AND DISC ASSEMBLY:	4
4	SEAT:	4
5	VALVE CAGE:	4
6	CYLINDER:	2
7	PISTON CUP:	2
8	PISTON HOLDER: A04	2
9	UMBRELLA: F/E04	2
10	WASHER: UMBRELLA	2
11	CUP WASHER: A04	2
12	CAP SCREW: HEX HEAD, 5/16 X 1.50 LG	2
13	RING SEAL: CYLINDER	2
14	VALVE COVER:	2
15	VALVE COVER CLAMP:	1
16	CAP SCREW: HEX HEAD, 1/2 X 1.50 LG	1
17	CAP SCREW: HEX HEAD, 3/8 X 5.00 LG	3
18	THREAD PROTECTOR: CAPPLUGS #T-12	1
19	CAPLUG: INT 14	1
20	GASKET: VALVE COVER	2
21	O-RING: UNIFORM #135	2
22	O-RING: UNIFORM #213	6
23	O-RING: UNIFORM #112	2



PRIVATE AND CONFIDENTIAL THIS DOCUMENT AND ALL THE INFORMATION CONTAINED HEREIN ARE THE CONFIDENTIAL AND EXCLUSIVE PROPERTY OF THE TECHNOLOGIES AND MAY NOT BE REPRODUCED, STORED, COPIED, OR USED IN ANY MANNER WITHOUT WRITTEN AUTHORIZATION BY THE TECHNOLOGIES. THIS DOCUMENT IS ISSUED PURSUANT TO AN ORDER OF THE FEDERAL BUREAU OF INVESTIGATION. INFORMATION CONTAINED HEREIN IS UNCLASSIFIED EXCEPT WHERE SHOWN OTHERWISE. THIS DOCUMENT SHALL BE CONSIDERED THE TECHNOLOGIES' PROPERTY, AND THAT TECHNICAL ARTICLES OR PARTS THEREOF SHALL NOT BE MANUFACTURED FOR THE USE OF SALE BY MANUFACTURER OR ANY OTHER PERSON OR ENTITY WITHOUT PRIOR WRITTEN AUTHORIZATION BY THE TECHNOLOGIES. ALL DIM'S CONCENTRIC WITHIN .010 (1.254) T.I.R.	UNLESS OTHERWISE SPECIFIED ALL DIMENSIONS ARE IN INCHES (MM)	TOLERANCE .X ± .001 (1.252) .XX ± .015 (1.381) .XXX ± .005 (1.271) INGLE ± 30°	DESCRIPTION: PUMP ASSEMBLY: A0410C RH, W/1 NPT X 3/4 NPT FLUID END, DISC VALVE ASSEMBLIES, HYD DRIVE, MOUNTING FEET	DRAWN BY: STILES, MICHAEL CHECKED BY: TAYLOR, BOB DESIGN REVIEW: LYON, TIM MANUFACTURING APPROVAL: CRUZ, GEORGE APPROVED BY: SINGLETERRY, RONALD	DATE: 11-OCT-2006 DATE: 31-OCT-2006 DATE: 05-DEC-2006 DATE: 05-NOV-2006 DATE: 08-DEC-2006	PART NO.: 5016875 REV.: A DRAWING NO.: 00500004611 COPYRIGHT © THE TECHNOLOGIES
	DO NOT SCALE THIS DRAWING ALL DIMENSIONS ARE IN INCHES (MM) BORE SHARP EDGES .015 (1.381) MAXIMUM INSIDE CORNER RADIUS .000 (1.252) MAXIMUM THREADS CONFORM TO FEDERAL STANDARD H-28 TAPPED THREADS CONFORM TO API 6A BOLT HOLES MUST STRADDLE COMMON CENTERLINE					



PRIVATE AND CONFIDENTIAL

UNLESS OTHERWISE SPECIFIED

DESCRIPTION

DRAWN BY:

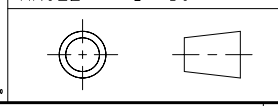
DATE:

THIS DOCUMENT AND ALL THE INFORMATION CONTAINED HEREIN ARE THE CONFIDENTIAL AND EXCLUSIVE PROPERTY OF FMC TECHNOLOGIES AND MAY NOT BE REPRODUCED, USED, DISCLOSED, OR MADE PUBLIC IN ANY MANNER PRIOR TO EXPRESS WRITTEN AUTHORIZATION BY FMC TECHNOLOGIES. THIS DOCUMENT IS ACCEPTED PURSUANT TO AGREEMENT TO THE FOREGOING, AND MUST BE RETURNED UPON DEMAND.

DO NOT SCALE THIS DRAWING
 ALL DIMENSIONS ARE IN INCHES (MM)
 BREAK SHARP EDGES .015 (.381) MAXIMUM
 INSIDE CORNER RADIUS .030 (.762) MAXIMUM
 THREADS CONFORM TO FEDERAL STANDARD H-28
 TAPERED THREADS CONFORM TO API 6A
 BOLT HOLES MUST STRADDLE COMMON CENTERLINE
 FINISH 250 RMS
 ALL DIA'S CONCENTRIC WITHIN .010 (.254) T.I.R.

TOLERANCE

.X -- ± .030 (.762)
 .XX -- ± .015 (.381)
 .XXX -- ± .005 (.127)
 ANGLE -- ± 30'



PUMP ASSEMBLY; A0410C RH, W/1 NPT X 3/4 NPT FLUID END, DISC VALVE ASSEMBLIES, HYD DRIVE, MOUNTING FEET

STILES, MICHAEL

11-OCT-2006

DRAFTING CHECK:

DATE:

TAYLOR, BOB

31-OCT-2006

DESIGN REVIEW:

DATE:

LYON, TIM

05-DEC-2006

MANUFACTURING APPROVAL:

DATE:

CRUZ, GEORGE

05-NOV-2006

APPROVED BY:

DATE:

SINGLETERRY, RONALD

08-DEC-2006



LATEST ECN NO. 5016875 REV. A

DRAWING NUMBER DU500004611

COPYRIGHT FMC TECHNOLOGIES