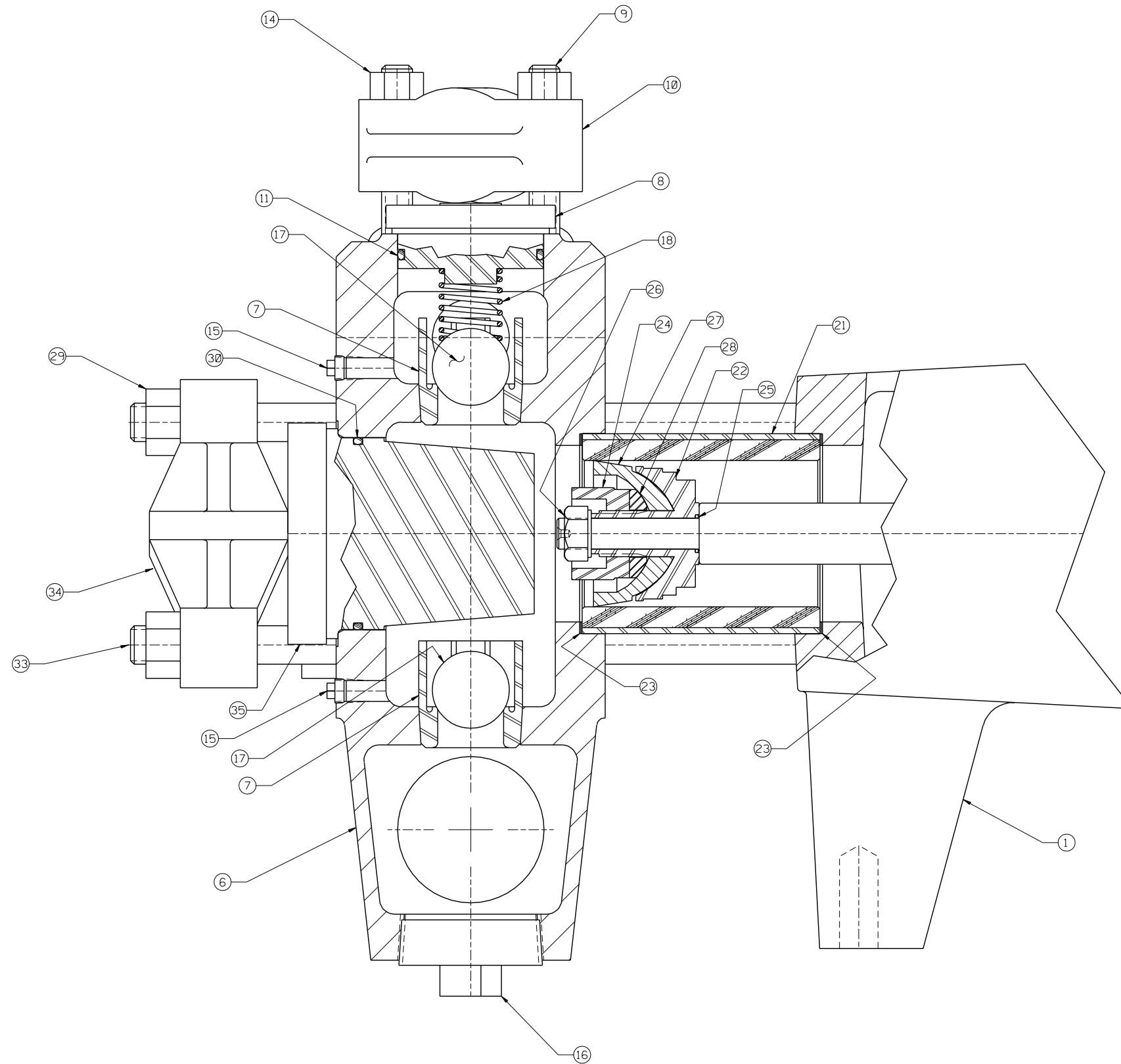


* THESE COMPONENTS ARE LOCATED IN THE FLUID CYLINDER ASSEMBLY, ITEM ②
 ** THESE COMPONENTS ARE LOCATED IN THE CYLINDER/PISTON GROUP, ITEM ③
 *** THESE COMPONENTS ARE LOCATED IN THE ATTACHING GROUP, ITEM ④



ITEM	NO. REQD	PART NO.	PART NAME
①	1	5271955	POWER END ASSEMBLY:
②	1	5268128	FLUID CYLINDER ASSEMBLY:
③	1	3264502	CYLINDER/PISTON GROUP:
④	1	5268141	ATTACHING GROUP:
⑤	1	5268145	CARTON/MANUAL GROUP:
* ⑥	1	5257262	FLUID CYLINDER:
* ⑦	6	1284740	VALVE SEAT:
* ⑧	3	5266193	VALVE COVER:
* ⑨	6	1248372	STUD: 1/2-13 UNC-2A X 4.0 LG.
* ⑩	3	1247716	VALVE COVER CLAMP:
* ⑪	3	1181154	O-RING: 2 3/8" OD X .125 NOM., BUNA-N
* ⑫	1	1177205	CAPLUG: INT. 44 (NOT SHOWN)
* ⑬	1	1177202	CAPLUG: INT. 17S (NOT SHOWN)
* ⑭	6	1121511	HEX NUT: 1/2-13
* ⑮	4	1109973	PLUG: 1/8" PIPE
* ⑯	3	1105121	PLUG: 2" PIPE
* ⑰	6	1101419	BALL: 1/8" DIA, 440 SST
* ⑱	3	5266191	VALVE SPRING:
* ⑲	1	1105133	PLUG: 2 1/2" PIPE (NOT SHOWN)
* ⑳	1	5260800	PLUG: 1 1/4" PIPE (NOT SHOWN)
** ㉑	3	1267586	CYLINDER: 2 3/4" ID, CERAMIC
** ㉒	3	A91663	CUP HOLDER:
** ㉓	6	1279676	CYLINDER GASKET:
** ㉔	3	A5016	PLUNGER NUT:
** ㉕	3	1101176	O-RING: 5/8" OD X .063 NOM., BUNA-N
** ㉖	3	8309	SPECIAL HEX NUT: 1/2-13
** ㉗	3	A268N	PISTON: 2 3/4" DIA, NEOPRENE & FABRIC
** ㉘	3	1216753	WASHER:
*** ㉙	8	1121513	HEX NUT: 5/8-11
*** ㉚	3	1177476	O-RING: 3 1/8" OD X .125 NOM., BUNA-N
*** ㉛	1	1187039	PETCOCK: (NOT SHOWN)
*** ㉜	2	1248349	STUD: 5/8-11 UNC-2A X 9.50 LG. (NS)
*** ㉝	6	5251859	STUD: 5/8-11 UNC-2A X 12.25 LG.
*** ㉞	3	A80392	CYLINDER HEAD CLAMP:
*** ㉟	3	5266194	CYLINDER COVER:

NOTES:

- 1 TORQUE FASTENERS PER FMC ENGR SPEC AS-22
- 2 TEST PUMP PER FMC ENGR SPEC AS-15
- 3 STAMP NAMEPLATE PER FMC ENGR SPEC AS-21
- 4 PAINT PUMP PER FMC ENGR SPEC CP-20

This drawing is the property of FMC Corporation, and may not be used, reproduced, published, or disclosed to others, without express authorization FMC Corp.		FMC Corporation Fluid Control Division 2825 W. Washington Box 1377 Stephenville, Texas 76401	
Unless Otherwise Specified: Remove all burrs & sharp corners .015 R. All diameters concentric within .018 T.I.R. Angles 1/2" .X ± .1 .XX ± .015 .XXX ± .005 Finish 125 RMS All dimensions are in inches		PUMP ASSEMBLY L1122SBCD, W/2 1/2" NPT X 1 1/4" NPT FLUID END, NEOPRENE & FABRIC PISTON & 440 SST BALL VALVE ASSEMBLIES	
RELEASED FOR PRODUCTION ECN DATE	CHJ 10-18-95	SCALE: NONE	DRAWING NO. 5267855
REV WAS ECN BY DATE	13847 CHJ 10-18-95	CKD. SL 11-03-95	APPD. RMC 12-08-95

B	REVISED & REDRAWN	13847	CHJ	10-18-95
REV	WAS	ECN	BY	DATE

5267855