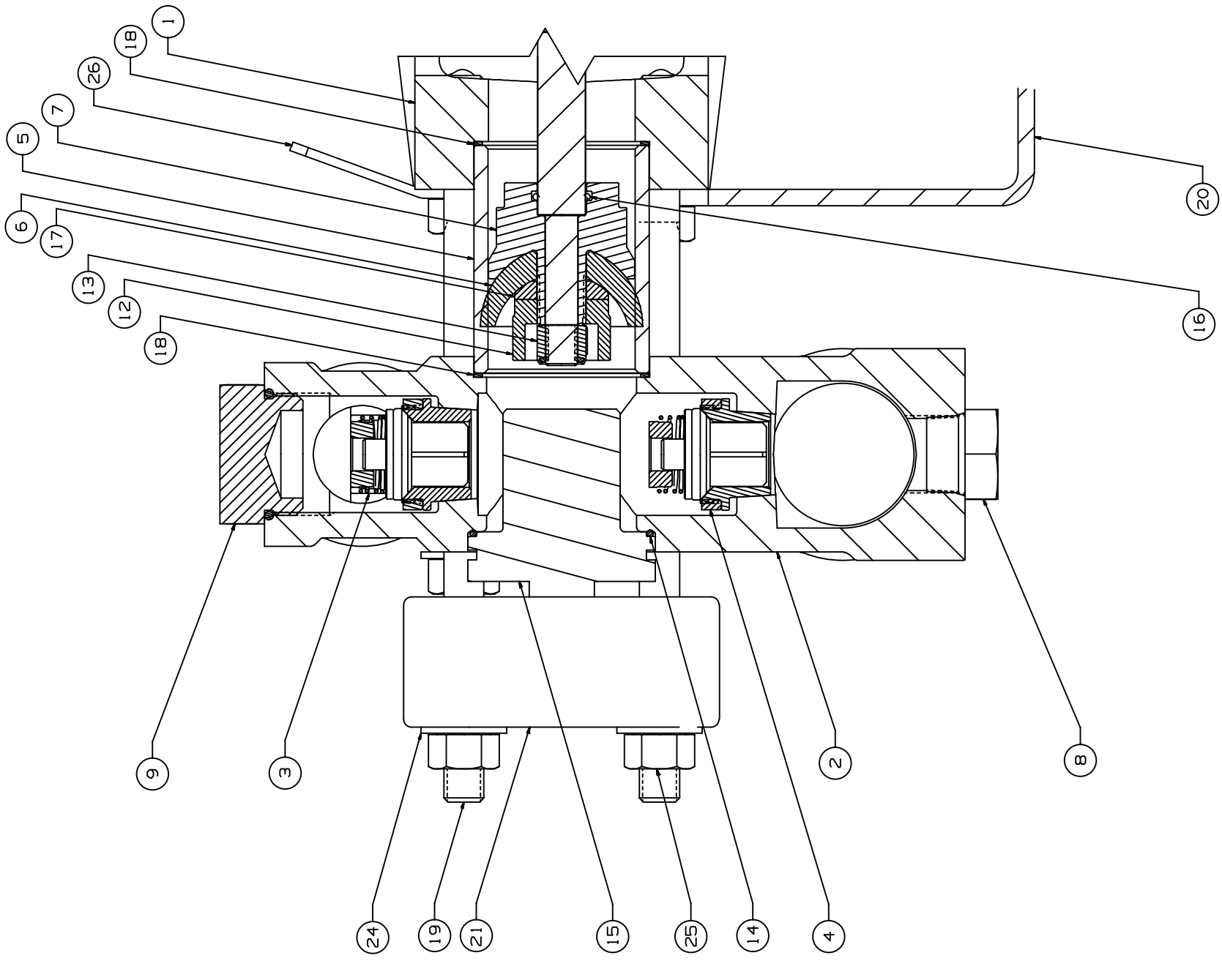
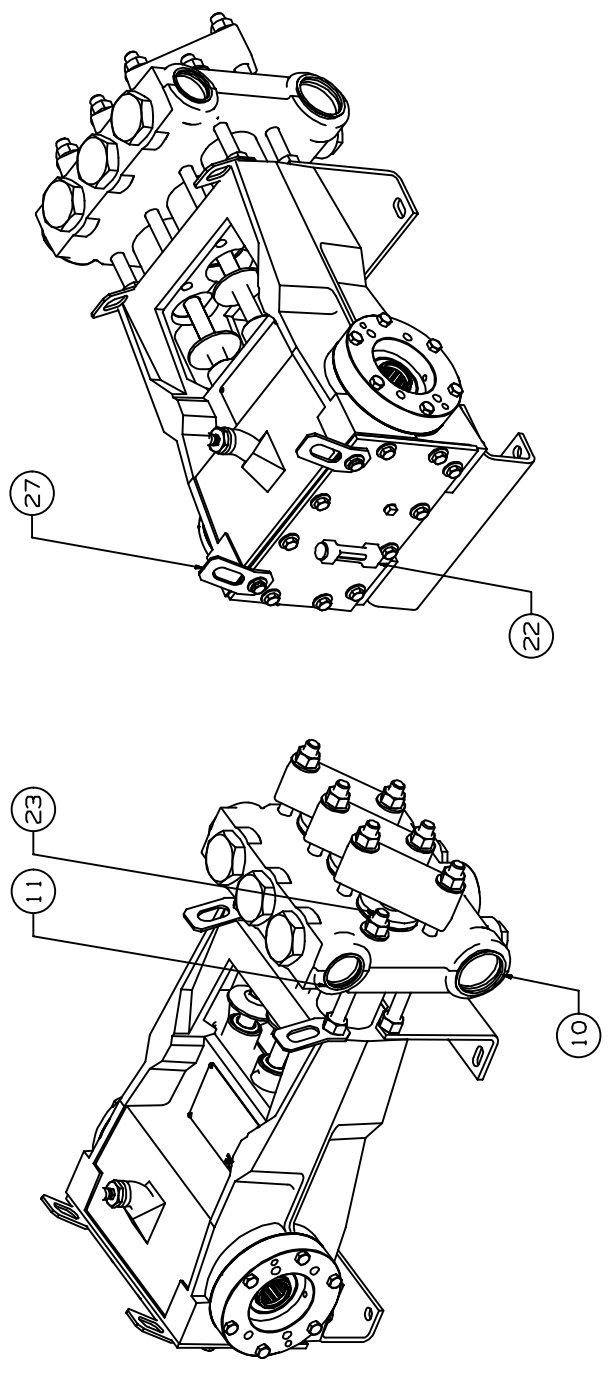


ITEM	DESCRIPTION	QTY
1	POWER END ASSEMBLY:	1
2	FLUID CYLINDER:	1
3	VALVE ASSEMBLY:	3
4	VALVE ASSEMBLY:	3
5	CYLINDER:	3
6	PISTON CUP:	3
7	PISTON HOLDER:	3
8	HEX HD, PLUG: #14 P50N	3
9	HEX HEAD PLUG: 1 7/8-12 UN-2A	3
10	CAPPLUG: MODEL 24S	2
11	CAPPLUG: MODEL 20S	2
12	PLUNGER NUT:	3
13	NUT: HEX, LOCK, LIGHT, 1/2-13-UNC-3B	3
14	O-RING: UNIFORM #146	3
15	CYLINDER COVER:	3
16	O-RING: UNIFORM #115	3
17	PISTON WASHER:	3
18	CYLINDER GASKET:	6
19	STUD: 5/8-11 X 11.15" LG	6
20	FRONT FOOT: F/M06/L06	1
21	CYLINDER COVER CLAMP:	3
22	LIQUID LEVEL GAGE:	1
23	STUD: 5/8-11 X 7.94" LG	2
24	FLAT WASHER: TYPE A, 5/8 N	8
25	HEX NUT: 5/8	12
26	LIFTING EYE: FRONT	2
27	LIFTING EYE: BACK	2



DESCRIPTION	UNLESS OTHERWISE SPECIFIED	TOLERANCE
PUMP ASSEMBLY: L0618 HV FLUID END: HSB PISTON HAR VALVE ASSEMBLY: HYD DRIVE	DO NOT SCALE THIS DRAWING ALL DIMENSIONS ARE IN INCHES (UN1) BREAK SHARP EDGES .015 (1.762) MAXIMUM INSIDE CORNER RADIUS .031 (1.762) MAXIMUM TAPERED THREADS CONFORM TO FEDERAL STANDARD H-28 TAPERED THREADS CONFORM TO API 6A BOLT HOLES MUST STRADDLE COMMON CENTERLINE UNLESS OTHERWISE SPECIFIED FINISH 250 RMS	X - .001, .001, .001 Y - .001, .001, .001 Z - .001, .001, .001 ANGLE - .1, .30

DATE	BY	DESCRIPTION
29-SEP-2004	KUNISHIGE, SCOTT	ISSUED FOR MANUFACTURE
29-SEP-2004	KUNISHIGE, SCOTT	REVISED
25-OCT-04	MCVEIGH, RANDALL	REVISED
20-OCT-04	CHARLTON, FRED	REVISED
6-DEC-04	RICHARDS, KEITH T.	REVISED