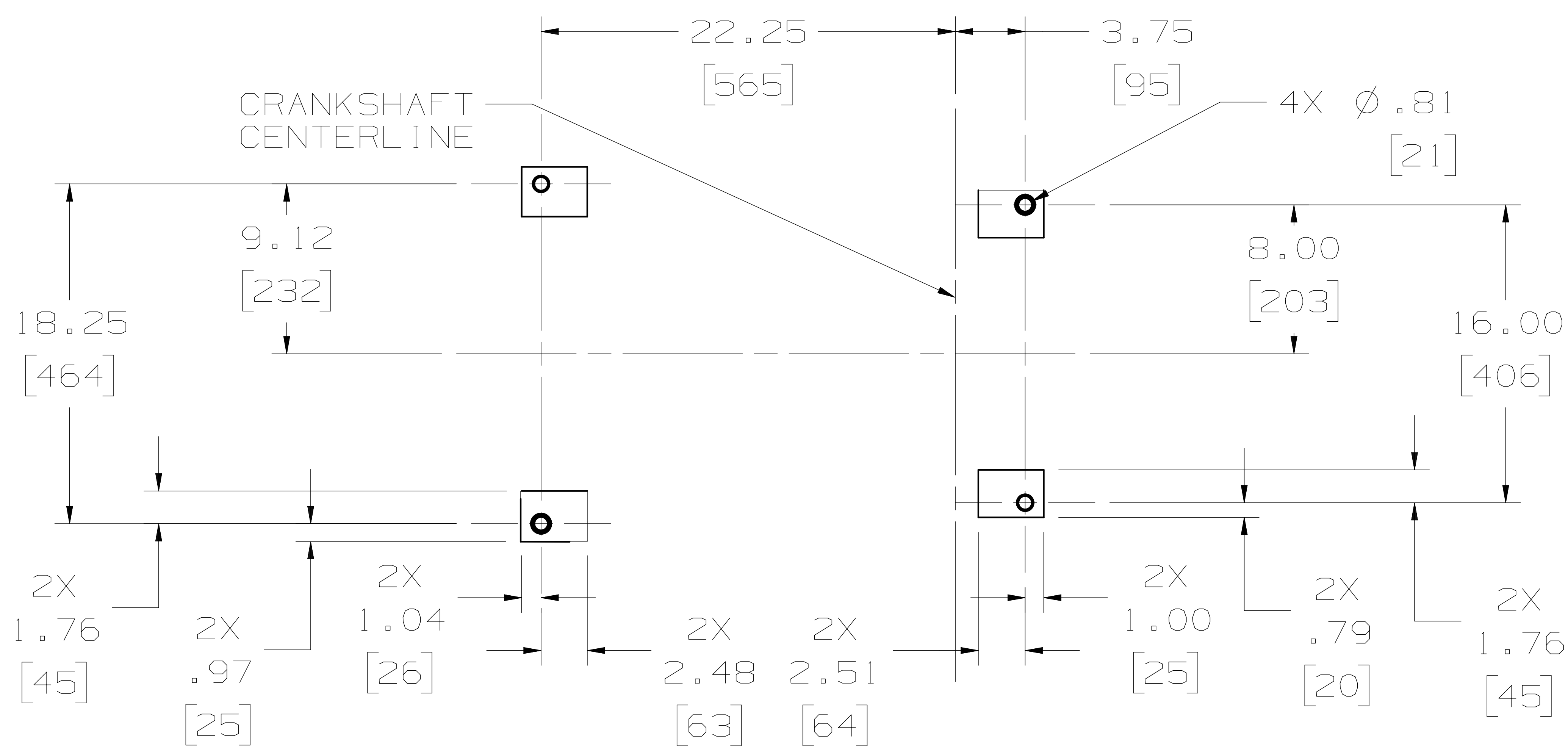
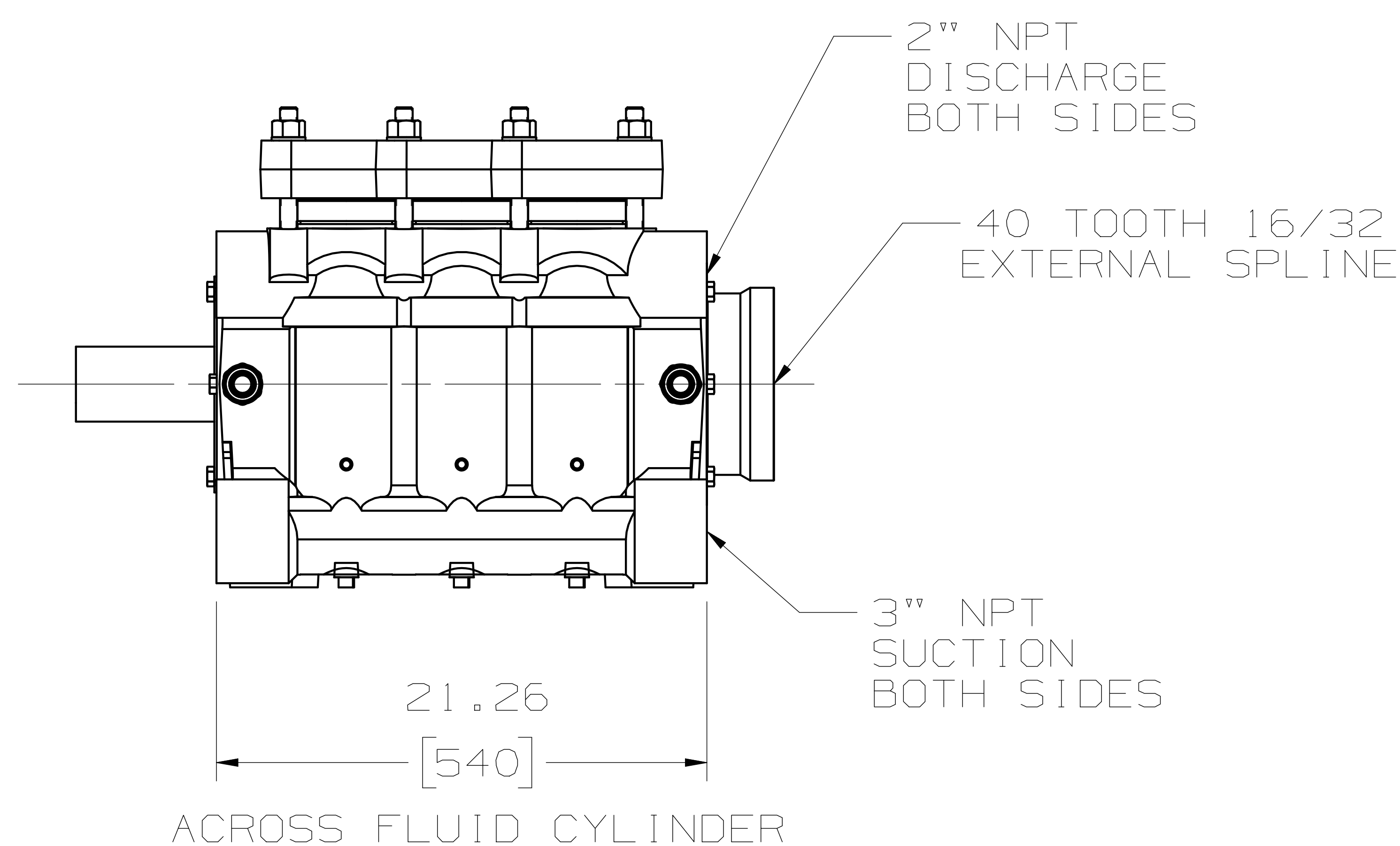
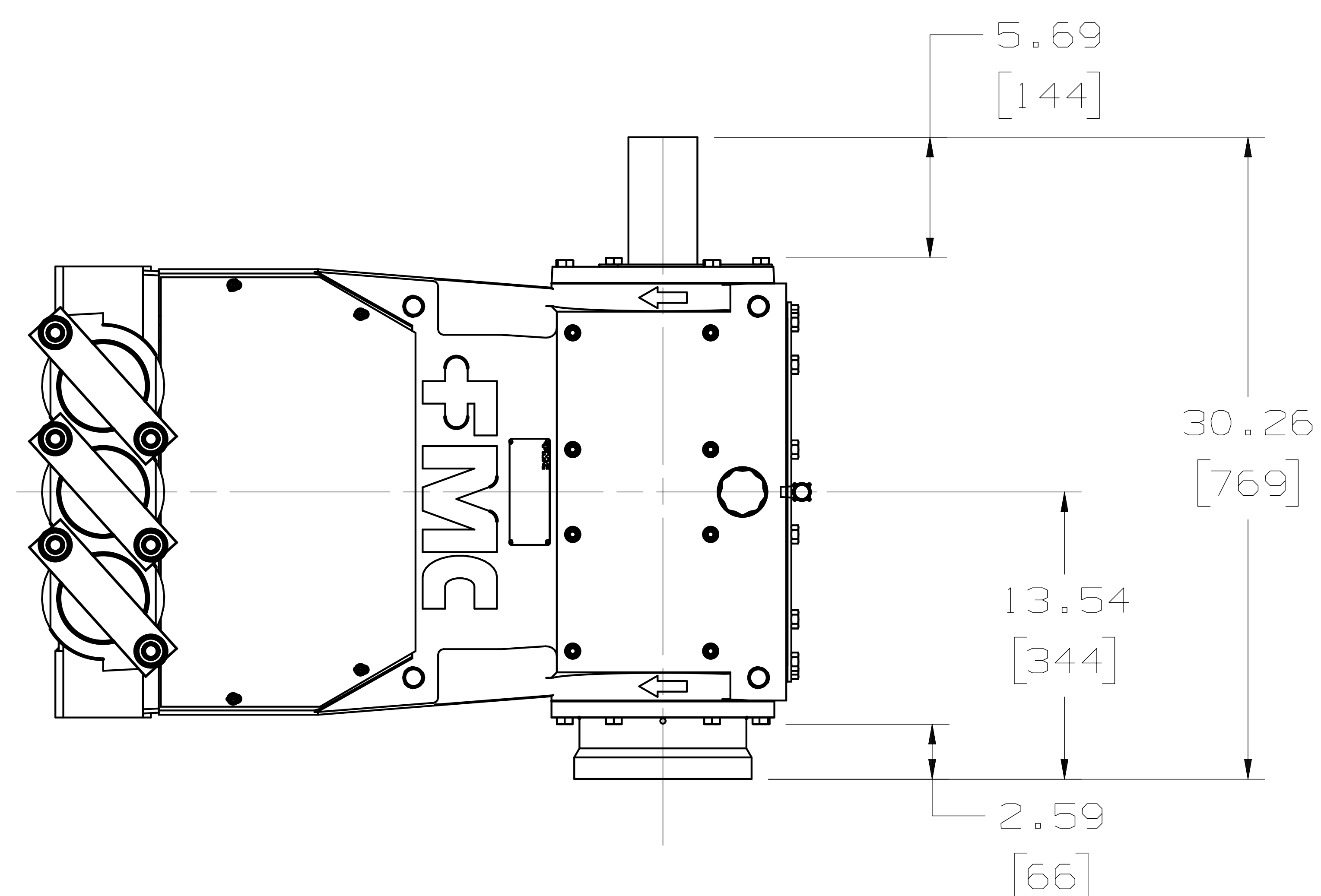


ITEM	DESCRIPTION	QTY
1	POWER END ASSEMBLY:	1
2	FLUID CYLINDER:	1
3	VALVE ASSEMBLY:	3
4	VALVE ASSEMBLY:	3
5	STUFFING BOX:	3
6	PACKING:	3
7	PLUNGER:	3
8	THROAT BUSHING/FOLLOWER:	3
9	ADJUSTING NUT:	3
10	VALVE COVER:	3
11	VALVE COVER CLAMP CASTING:	3
12	CRADLE COVER:	1
13	SHAFT GUARD:	1
14	O-RING: UNIFORM #239	3
15	O-RING: UNIFORM #243	3
16	STUD: 3/4 X 5.75 LG	6
17	STUD: 3/4 X 6.50 LG	6
18	STUD: 1 X 5.50 LG	2
19	FLAT WASHER: TYPE A, 3/4 N	12
20	HEAVY HEX NUT: 3/4	12
21	LOCKNUT: HYV HEX, 1 NYLON INSERT	2
22	SET SCREW: 5/16 X .50 LG, NYLON TIP	3
23	PIPE PLUG: SQ HEAD, 3/4 NPT	3
24	PLUG: 1/8 NPT	3
25	NAMEPLATE:	1
26	SELF TAPPING SCREW:	4
27	CAPPLUG: MODEL 24S (NOT SHOWN)	2
28	CAPPLUG: MODEL T-501 (NOT SHOWN)	2

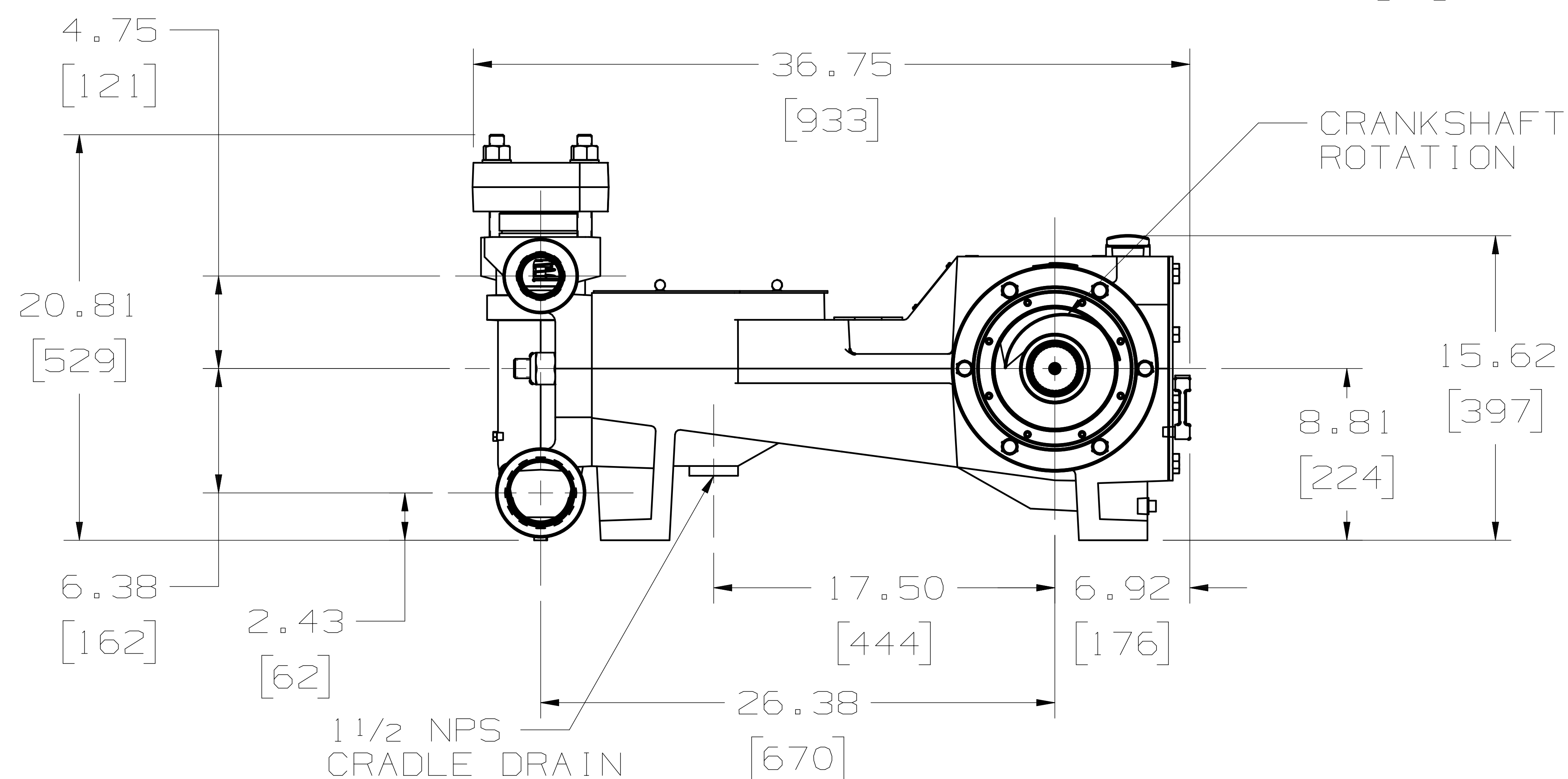
<b>PRIVATE AND CONFIDENTIAL</b> THIS DOCUMENT AND ALL THE INFORMATION CONTAINED HEREIN ARE THE CONFIDENTIAL AND EXCLUSIVE PROPERTY OF FMC TECHNOLOGIES AND MAY NOT BE REPRODUCED, USED, DISCLOSED, OR MADE PUBLIC IN ANY MANNER PRIOR TO EXPRESS WRITTEN AUTHORIZATION BY FMC TECHNOLOGIES. THIS DOCUMENT IS ACCEPTED PURSUANT TO AGREEMENT TO THE FOREGOING, AND MUST BE RETURNED UPON DEMAND. MANUFACTURER AGREES THAT ARTICLES MADE IN ACCORDANCE WITH THIS DOCUMENT SHALL BE CONSIDERED FMC TECHNOLOGIES' DESIGN, AND THAT IDENTICAL ARTICLES OR PARTS THEREOF SHALL NOT BE MANUFACTURED FOR THE USE OR SALE BY MANUFACTURER OR ANY OTHER PERSON OR ENTITY WITHOUT PRIOR EXPRESS WRITTEN AUTHORIZATION BY FMC TECHNOLOGIES.	<b>UNLESS OTHERWISE SPECIFIED</b> DO NOT SCALE THIS DRAWING ALL DIMENSIONS ARE IN INCHES (MM) BREAK SHARP EDGES .015 (1.381) MAXIMUM INSIDE CORNER RADIUS .030 (1.762) MAXIMUM THREADS CONFORM TO FEDERAL STANDARD H-28 TAPERED THREADS CONFORM TO API 6A BOLT HOLES MUST STRADDLE COMMON CENTERLINE FINISH 250 RMS ALL DIA'S CONCENTRIC WITHIN .010 (1.254) T.I.R.		<b>TOLERANCE</b> .X -- ± .030 (0.762) .XX -- ± .015 (0.381) .XXX -- ± .005 (0.127) ANGLE -- ± 0° 30'	DESCRIPTION PUMP ASSEMBLY; M1224 SC RH, W/3 NPT X 2 NPT FLUID END, V-RING PKG, AR VALVE ASSEMBLIES, SPLINED SHAFT	DRAWN BY: WOLVERTON, JARROD DRAFTING CHECK: WOLVERTON, JARROD DESIGN REVIEW: SINGLETERRY, RONALD MANUFACTURING APPROVAL: CRUZ, GEORGE APPROVED BY: LYON, TIM	DATE: 01-OCT-2009 DATE: 09-JUN-2010 DATE: 13-JUL-2010 DATE: 10-JUL-2010 DATE: 19-AUG-2010	LATEST ECN NO. 5023223 DRAWING NUMBER DUS00016525 SHEET 1/2 COPYRIGHT FMC TECHNOLOGIES	<b>FMC Technologies</b>
---	--	--	--	--	---	--	--	-------------------------



FOOT PRINT AND MOUNTING DETAIL



ACROSS FLUID CYLINDER



PRIVATE AND CONFIDENTIAL

THIS DOCUMENT AND ALL THE INFORMATION CONTAINED HEREIN ARE THE CONFIDENTIAL AND EXCLUSIVE PROPERTY OF FMC TECHNOLOGIES AND MAY NOT BE REPRODUCED, USED, DISCLOSED, OR MADE PUBLIC IN ANY MANNER PRIOR TO EXPRESS WRITTEN AUTHORIZATION BY FMC TECHNOLOGIES. THIS DOCUMENT IS ACCEPTED PURSUANT TO AGREEMENT TO THE FOREGOING, AND MUST BE RETURNED UPON DEMAND.

MANUFACTURER AGREES THAT ARTICLES MADE IN ACCORDANCE WITH THIS DOCUMENT SHALL BE CONSIDERED FMC TECHNOLOGIES' DESIGN, AND THAT IDENTICAL ARTICLES OR PARTS THEREOF SHALL NOT BE MANUFACTURED FOR THE USE OR SALE BY MANUFACTURER OR ANY OTHER PERSON OR ENTITY WITHOUT PRIOR EXPRESS WRITTEN AUTHORIZATION BY FMC TECHNOLOGIES.

ENGINEERING  
DIMENSIONAL  
OUTLINE

DESCRIPTION  
PUMP ASSEMBLY; M1224 SC  
RH, W/3 NPT X 2 NPT  
FLUID END, V-RING PKG,  
AR VALVE ASSEMBLIES,  
SPLINED SHAFT

DRAWN BY: WOLVERTON, JARROD	DATE: 01-OCT-2009
DRAFTING CHECK: WOLVERTON, JARROD	DATE: 09-JUN-2010
DESIGN REVIEW: SINGLETERRY, RONALD	DATE: 13-JUL-2010
MANUFACTURING APPROVAL: CRUZ, GEORGE	DATE: 10-JUL-2010
APPROVED BY: LYON, TIM	DATE: 19-AUG-2010



LATEST ECN NO. 5023223	REV. A
DRAWING NUMBER DU500016525	SHEET 2/2

COPYRIGHT FMC TECHNOLOGIES